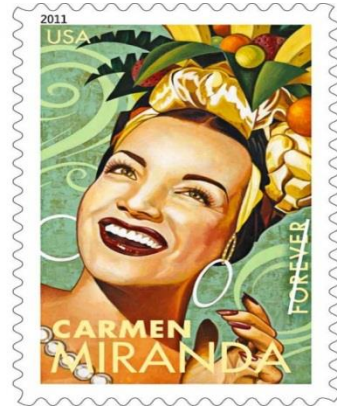


Name: _____

UNIT 2

FOOD- HOW DO YOU ANSWER THE QUESTION?



Essay Planning and Writing

1. _____ 20 pts. 11/9-11
 2. _____ 50 pts. 1/6
 3. _____ 50 pts.
 4. _____ 20 pts. 11/16-17
 5. _____ 30 pts.
 6. Scaffolding for Essay Grade - _____ 12/15
 7. _____ 20 pts. 11/28-29
 8. _____ 50 pts. 1/6
- Extra Credit - _____

Message to the Instructor:

Items 1, 2, 3, 4, 5, 7, and 8 are graded as the research and reading grade and will compose one grade.

230 pts. X .4 = _____ Research and Reading Grade 1/9

Items 6 and 9 will all be separate grades and count equally with the Research and Reading Grade.

1. **Video:** *Food Inc.* – 2 days (94 minutes) The students will watch the video and discuss questions to be answered for research. Each student must submit five questions. 20 pts. (3)
2. **Books.** The student will start the book of your choice for unit 3. The student will highlight and note take. The student needs to write at least 5 notes (notes are in the form of a question developed) per chapter and 5 highlights per chapter (different if you read *A Long Way Gone*). You need to read half of the book this unit. If the student is using the paperback the student needs to tab all places in each chapter or list, the highlights and notes per chapter. If you have a Kindle, make sure your notes and highlights are synced with a good Wi-Fi signal. Suggestions for essay methods to do this are explained on the website. These notes will be used in a **Book Deconstruction in the next unit**. The student must have the following items: thesis and counter thesis, if any, five questions from the book, twenty facts with page numbers, a raven exercise of the author, 5 reasons the author gives to support the thesis, and 5 examples the author uses to illustrate the reasons. 50 pts. (5)
3. **Videos.** The student will select five videos on the research topic they selected. Write a full citation and then a one paragraph summary of each video (annotated bibliography). Select the best video and deconstruct this one. List the thesis or question. List three reasons given by the author. List examples given by the author and list the conclusion. Include the counterargument if there is one. 50 pts. (3)
4. **Video and Creating Questions.** Watch the video *What's Wrong with What We Eat?* Matt Bittman TED lecture
The students will create questions from the video. Role play a better version. 20 pts. (2)
5. **Global Perspective.** Select five quotes from your research which illustrates the global nature of the issue. These examples need to be placed as raw material and cited. This will show that authors you selected see this as a

global issue. Make sure you have industrialized nations and LDCs in the research. 30 pts. (2)

6. **Scaffolding or Rough Draft for Essay.** The student will create a scaffolding / rough draft for the essay with references. Follow the same format as last time but all sources must be validated. The scaffolding format is on the website and blackboard. 100 pts. (3)
7. **Video – Presentation skills** – Watch the video *How I Fell in Love with a Fish*. List the good and the poor qualities of the presenter. (10) List the question, thesis, reasons, examples, counter argument, conclusion, and fallacies in the presentation. Class discussion. 20 pts. (2)
8. **Deconstruction.** The student will go to the shshistory.com and select the file labeled Paper 1 --9239 s15 rb 11 and right click **print**. Using the printed document deconstruct the article using the deconstruction rubric on the website. Yes, you will need to highlight, note take, and label. When you have finished answer the questions about it. These are found under 9239 s15 qp 11, DO NOT DOWNLOAD THIS DOCUMENT JUST LEAVE THE FILE OPEN!!! Follow the instructions carefully. Read AND deconstruct the first article then answer the questions. Then you will read the second article and answer more questions that cover both articles. This assignment should take less than 1 hour and 30 minutes. The questions should be thoroughly expressed in quotes and/or paragraph format. The deconstruction is due at the beginning of day three. 50 pts. (3)
9. **Essay.** The student will write a 1700 to 2000 word essay on their question. The student will write the essay at home but can receive assistance from the instructor during the process. Do not wait to the last minute. I have built in three days to assist you with the essay. Start early so I can assist. The student must submit the essay to two other students who must peer review the essay. The peer review must be submitted with the final essay. Essay 80 pts. and Peer Review is worth 20 points. Peer reviews will use the checklist for peer reviewing on the website and blackboard (3) (2)